



Water Watch and Monitoring System for Warning Center

Royal Irrigation Department, Ministry of Agriculture and Cooperatives

Tel: 0 2669 2560 Fax 0 2243 6965, 0 2241 3350, 0 2243 2098 Hotline: 1460

<http://www.rid.go.th/2009>, <http://wmsc.rid.go.th>, E-mail : wmsc.1460@gmail.com

Daily Report on Water Situation in rainy season 2014

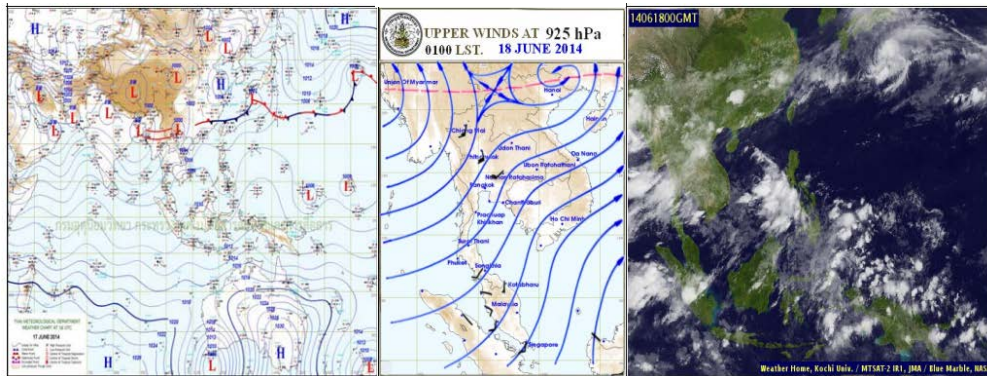
On Wednesday 18 June 2014

1. Weather Situation

Weather Maps

Upper Winds
at 925 hPa

Satellite Images

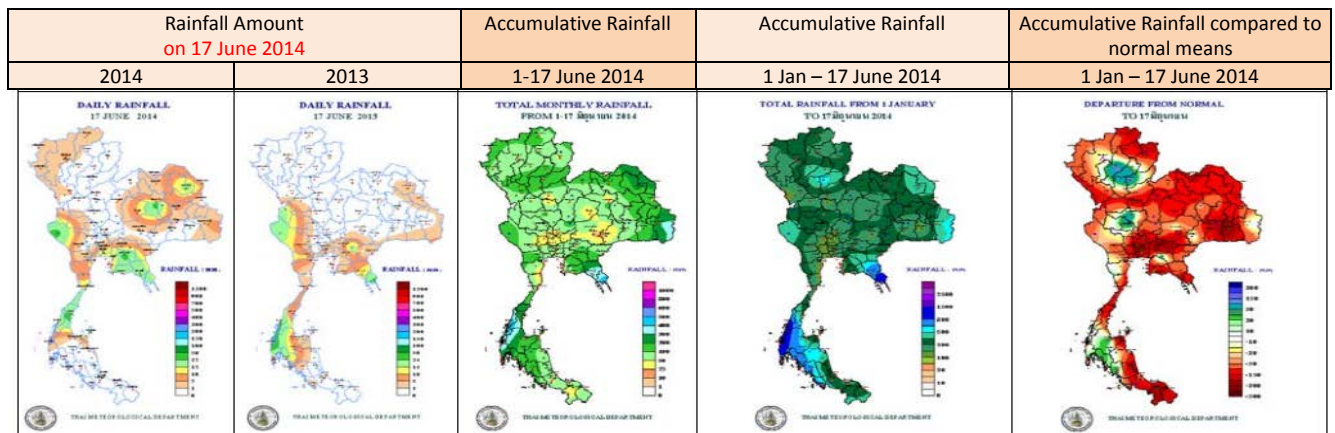


During 18-20 June, the monsoon trough moves across Myanmar, Laos PDR and Vietnam with decreasing rain in upper Thailand. The rather strong southwest monsoon still prevails over Andaman Sea, Thailand and the Gulf leads to isolated heavy rain in the western portion and the East of Thailand. The wind wave is likely 2-3 meters high in the upper Andaman Sea. All ships should proceed with caution, and small boats keep ashore. (<http://www.tmd.go.th/>)

2. Rainfall Situation

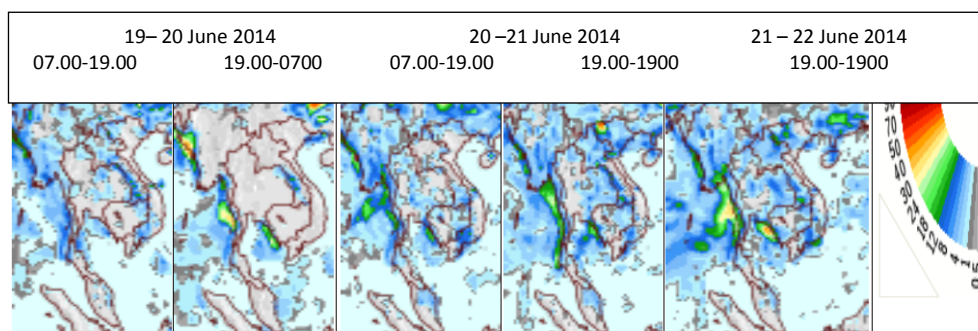
Maximum Rainfall by region from 07.00 AM of 17 June 2014 to 07.00 AM of 18 June 2014

North	at Muang District	Phrae	12.9	mm.
Northeast	at Muang District	Khon Kaen	32.9	mm.
Central	at Thong Pha Phum District	Kanchanaburi	29.0	mm.
East	at Sanam Chaikhet District	Chachoensao	30.5	mm.
South (East coast)	at Sawi District	Chum Phon	28.8	mm.
South (west coast)	at Muang District	Ranong	16.9	mm.



(Source: Thai Meteorological Department – unmeasured rain less than 0.1 mm. Light rain 0.1-10.0 mm. Moderate rain 10.1-35.0 mm. Heavy rain 35.1-90.0 mm. Very heavy rain over 90.1 mm.)

3-day forecast



Source : The National Centers for Environmental Prediction, starting prediction on **17 June 2014**

It rains all over the country about 10-20 mm.during 19-22 June 2014, and in the East and the Lower North about 20-30 mm. during 21-22 June 2014

3. Water Conditions in Reservoirs

Water condition in **large and medium scale reservoirs**: Water volume is **35,860 MCM** or **48%** (available water volume is **12,057 MCM** or **24%**). Water volume in reservoirs, comparing to the year 2013 (**34,263 MCM** or **46%**) is more than the year 2013 about **1,597 MCM**. Water discharge into reservoir is **91.41 MCM**. Water release is **123.03MCM**, and more water intake capacity is **38,839 MCM**.

Water condition in **large scale reservoirs**: Water volume is **33,800 MCM** or **48%** (available water volume is **10,297 MCM** or **22%**) Water volume in reservoirs, comparing to the year 2013 (**32,356 MCM** or **46%**) is more than year 2013 about **1,444 MCM**. Water discharge into reservoir is **77.80 MCM**. Water release is **113.34 MCM**, and more water intake capacity is **36,526 MCM**.

Water condition in large and medium scale reservoirs on 18 June 2014

Region	Large scale						Medium scale						Total				more intake capacity		
	No.	Capacity	Water Volume				No.	Capacity	Water Volume				No.	Capacity	Water Volume				
			stored	%	usable	%			stored	%	usable	%			Stored	%		usable	%
North	7	24,715	8,324	34	1,585	9	70	873	419	48	333	40	77	25,588	8,743	34	1,918	10	16,845
Northeast	12	8,323	2,896	35	1,246	19	265	2,003	897	45	747	40	277	10,326	3,793	37	1,993	23	6,533
Central	3	1,360	221	16	161	12	15	132	41	31	40	46	18	1,492	262	18	201	14	1,230
West	2	26,605	16,627	62	3,350	25	8	132	78	59	69	56	10	26,737	16,705	62	3,419	25	10,032
East	5	1,173	402	34	322	29	51	649	309	48	270	44	56	1,822	711	39	592	35	1,111
South	4	8,150	5,330	65	3,633	56	39	584	316	54	301	53	43	8,734	5,646	65	3,934	56	3,088
Total	33	70,326	33,800	48	10,297	22	448	4,373	2,060	47	1,760	43	481	74,699	35,860	48	12,057	24	38,839

Unit : MCM

Water condition in main reservoirs: Bhumibol Sirikit Khwae Noi and Pasak, on 18 June 2014

Reservoir	Water volume in reservoir		Available water use		Water discharge into reservoir		Water release		More intake capacity
	Stroed	%	Stroed	%	Today	Yesterday	Today	Yesterday	
Bhumibol	4,450	33	650	7	1.51	5.34	22.00	22.00	9,012
Sirikit	3,395	36	545	8	18.58	13.09	17.95	18.08	6,115
Bhumibol+Sirikit	7,845	34	1,195	7	20.09	18.43	39.95	40.08	15,127
Khwae Noi	143	15	100	11	2.36	2.73	2.59	2.59	796
Pasak Jolasid	101	11	98	10	2.38	1.54	3.06	3.08	859
Total	8,089	33	1,393	8	24.83	22.70	45.60	45.75	16,782

Unit : MCM

10 Large scale reservoirs under water storage criteria (less than or equal to 30% of its capacity)

Reservoir	Water volume in Today 18 June 2014		Available water use 18 June 2014		Water discharge into reservoir		Water release		More Intake Capacity
	Stroed	%	Stroed	%	today	yesterday	today	Yesterday	
1. Mae Kuang	71	27	57	23	0.12	0.24	0.06	0.06	192
2. Khwae Noi	143	15	100	11	2.36	2.73	2.59	2.59	796
3. Huai Luang	27	20	20	16	0.00	0.06	0.09	0.09	108
4. Nam Pung	50	30	40	26	0.00	0.15	0.47	0.40	116
5. Lam Pao	368	19	268	14	0.72	0.65	0.94	0.87	1,612
6. Lam Pra Pleung	24	22	23	21	0.11	0.10	0.00	0.09	86
7. Pasak Jolasid	101	11	98	10	2.38	1.54	3.06	3.08	859
8. Thap Salao	26	16	9	6	0.00	0.00	0.00	0.00	134
9. Khun Dan	15	7	11	5	1.23	1.35	0.09	0.08	209
10. Khlong Siyat	103	25	73	19	0.00	0.00	0.00	0.00	317

Unit : MCM

4. Runoff Condition (at 06.00 am.)

River	Station	Location	River bank	Discharge volume (m ³ /sec)	Water level (m.)	Water discharge		Lower (-) Higher (+) river bank	Criteria	Trend		
						Today (m ³ /sec)	Yesterday (m ³ /sec)					
1. Ping	P.1	Muang, Chiang Mai	3.70	440	1.35	28	20	-2.35	น้อย	เพิ่มขึ้น	lower	up
	P.7A	Muang, Kamphaeng Phet	5.87	4,035	0.97	264	296	-4.90	น้อย	ลดลง	lower	down
	P.17	Banphot phisai, Nakorn Sawan	38.08	1,815	35.25	227	194	-2.83	น้อย	เพิ่มขึ้น	lower	up
2. Wang	W.4A	Samngao, Tak	6.10	458	1.11	15	17	-4.99	น้อย	ลดลง	lower	down
	Y.1C	Muang, Phare	8.20	1,000	0.90	18	27	-7.30	น้อย	ลดลง	lower	down
3. Yom	Y.16	Bang Rakam, Phitsanulok	7.00	368	2.85	57	52	-4.15	ปกติ	เพิ่มขึ้น	Normal	up
	N.1	Muang, Nan	7.00	1,265	0.14	30	32	-6.86	น้อย	ลดลง	lower	down
	N.5A	Muang, Phitsanulok	10.54	1,452	2.55	222	194	-7.99	ปกติ	เพิ่มขึ้น	Normal	up
5. Mon	N.67	Chumsaeng, Nakorn Sawan	28.30	1,520	20.46	203	200	-7.84	น้อย	เพิ่มขึ้น	lower	up
	M.6A	Satuk, Buriram	5.40	330	0.89	2	2	-4.51	น้อย	ทรงตัว	lower	stable
	M.9	Muang, Srisaket	9.00	205	0.82	1	1	-8.18	น้อย	ทรงตัว	lower	stable
	M.7	Muang, Ubon Ratchathani	7.00	2,360	2.90	-	-	-4.10	-	-	-	-
6. Phra Satung	Kgt.10	Muang, Sa Kaeo	11.00	285	5.63	-	-	-5.37	-	-	-	-
	Kgt.3	Krabinburi, Prachinburi	10.20	578	0.98	23	14	-9.22	น้อย	เพิ่มขึ้น	lower	up
8. Tha Tapao	X.158	Tha Sae, Chumphon	12.00	702	4.58	75	314	-7.42	น้อย	ลดลง	lower	down
9. Tapee	X.37A	Prasaeng, Surathani	10.76	464	6.96	104	63	-3.80	ปกติ	เพิ่มขึ้น	Normal	up
10. Ko-lok	X119A	Suhai Kolok, Narathiwat	8.20	225	3.64	11	13	-4.56	น้อย	ลดลง	lower	down
11. Tan Yongmat	X.73	Rangae, Narathiwat	15.58	135	10.59	5	5	-4.99	น้อย	ทรงตัว	lower	stable

Chao Phraya River Station C.2 discharge volume of **373 m³/sec** (yesterday: **368 m³/sec**) water level: **+18.98 m.M.S.L.** which is **7.22 m.** lower than the bank.

Chao Phraya Diversion Dam Station C.13 discharge volume of **55 m³ /sec** (yesterday: **55 m³/sec**), water level at upstream **+15.35 m.M.S.L.** (yesterday: **+15.14 m.M.S.L.**), water level at downstream **+5.70 m.M.S.L.**(yesterday: **+5.70 m.M.S.L.**)

Water intake into distribution system in eastern ward field Discharge volume of **142 m³/sec** (yesterday: **139 m³/sec**), at Chai Nat - Pa Sak Canal (Manorom Regulator): **115 m³/sec**, at Chai Nat- Ayutthaya Canal (Maharat Regulator), **21 m³/sec**, at other small canals **6 m³/sec** by water intake from Raphiphat Canal (Phra Narai Regulator): **50 m³/sec**.

Water intake into distribution system in western ward field Discharge of **200 m³/sec** (yesterday: **202 m³/sec**), at Makham Thao Uthong Canal (Makham Thao-Uthong Regulator): **20 m³/sec**, at Suphan River (Phonlathep Regulator): **60 m³/sec**, at Noi River (Borommathat Regulator): **94 m³/sec**. and other small canals **26 m³/sec**.

Bang Sai District Station C.29A average discharge: **71 m³/sec** (yesterday: **69 m³/sec**)

Rama IV Barrage Discharge of **26 m³/sec** (yesterday: **21 m³/sec**)

5. Water Quality

RID monitored and watched the water quality in Chao Phraya River as the table below.

River	Warning Point	Dissolved Oxygen (mg/l)	Salinity (g/l)	Condition	Remarks
Chao Phraya	Mouth of Khlong Samlae, Patumthani	3.91 13 June 2014	0.23 18 June 2014 (08.00)	Normal	- DO is not lower than 2 mg/l - Salinity of water for agriculture is not over 2 g/l (for waterwork is not over 0.25 g/l)
Chao Phraya	Non Pier, Nonthaburi	0.60 13 June 2014	2.59 18 June 2014 (08.00)	DO lower than standard, normal salinity	
Chao Phraya	RID Pier, RID Samsen Bangkok	1.06 13 June 2014	4.53 18 June 2014 (08.00)	DO lower than standard, normal salinity	

6. Water situation in Mekong River

Station	Bank level	Water level 18 June 2014	Water level 17 June 2014	Lower (-) Higher (+) river bank	+ increase - decrease from Yesterday	Trend
Chiangsai, Chiang rai	11.80	3.43	3.46	-8.37	-0.03	down
Chiangkhan, Loei	17.40	6.37	6.29	-11.03	0.08	up
Muang, NongKhai	12.20	3.56	3.28	-8.64	0.28	up
Muang, Nakhonpanom	12.70	3.64	3.56	-9.06	0.08	up
Muang, Mukdaharn	12.80	4.17	4.18	-8.63	-0.01	down
Kongchiam, Ubonratchathani	15.50	4.67	4.70	-10.83	-0.03	down

Source : division.dwr.go.th/brdh

7. Drought situation

Department of Disaster Prevention and Mitigation has declared the area to help the victims of disaster emergency (drought disaster) since October 2013 – present: 28 provinces 190 districts 1,236 sub-districts and 12,562 villages as follows:

Sukhothai, Phrae, Tak, Nan, Phitsanulok, Phichit, Lamphun, Chiang Rai, Phetchabun, Buriram, Sisaket, Chaiyaphum, Maha Sarakham, Kalasin, Surin, Nakhon Ratchasima, Nong Khai, Amnart Charoen, Udon Thani, Saraburi, Suphanburi, Pathum Thani, Sumut Prakan, Sa Kaeo, Surat Thani, Nakhon Srithammarat, Chumphon, Songkhla,

Source : Department of Disaster Prevention and Mitigation

8. Readiness Preparation and Help Offer

1,900 Mobile pumps are prepared by RID in order to help the area of in and off-seasons rice and field crops. Now, 52 pumps are installed as below.

8.1 In-season rice field

Region	Province	Pumps	Name list of province
Central, East, West	3	15	Chainat (6) Sing buri (3) Nakhon Sawan (2) Suphanburi (4)
Total	3	15	

8.2 Off-season rice field

Region	Province	Pumps	Name list of province
North	2	5	Uttaradit (4) Tak (1)
Total	2	5	

8.3 Field crops

Region	Province	Pumps	Name list of province
North	2	31	Chiang Rai (3) Phrae (28)
Total	2	31	

8.4 Consumption

Region	Province	Pumps	Name list of province
Central, East, West	1	1	Chainat (1)
Total	1	1	

295 water trucks are prepared (55 trucks for the North, 90 trucks for the Northeast, 114 trucks for the Central, the East and the West and 36 trucks for the South)

Prepared by Mr. Methas Yuenprapan
Reviewed by Mr.Thanet Somboon
Translated by Ms. Janjira Buddhawong