



Water Watch and Monitoring System for Warning Center

Royal Irrigation Department, Ministry of Agriculture and Cooperatives

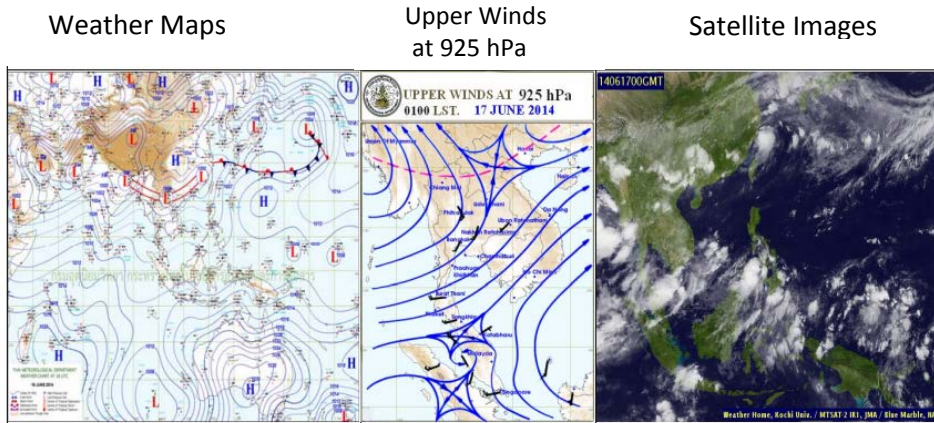
Tel: 0 2669 2560 Fax 0 2243 6965, 0 2241 3350, 0 2243 2098 Hotline: 1460

<http://www.rid.go.th/2009>, <http://wmsc.rid.go.th>, E-mail : wmsc.1460@gmail.com

Daily Report on Water Situation in rainy season 2014

On Tuesday 17 June 2014

1. Weather Situation

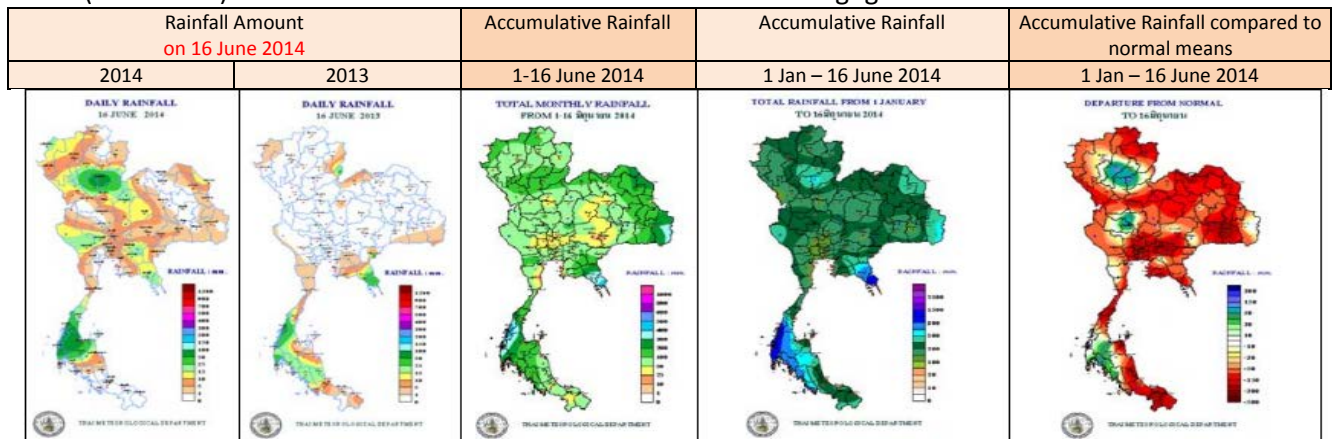


The moderate monsoon trough move to across Myanmar, the upper North of Thailand and Laos while the strong southwest monsoon still prevails across the Andaman Sea, Thailand and the Gulf. Abundant rain, as well as isolated heavy rain, remains over the country. People should beware of the severe weather condition by today. The strong wind waves in the Andaman Sea and the upper Gulf of Thailand are likely 2-4 meters high. All ships should proceed with caution, and small boats keep ashore. During 18-20 June, the monsoon trough will weaken with decreasing rain in the upper Thailand. The strong southwest monsoon becomes to be moderate but isolated heavy rains remain in the western portion and the East of Thailand. The moderate wind wave with about 2 meters high is expected in the Andaman Sea and the upper Gulf of Thailand. (<http://www.tmd.go.th/>)

2. Rainfall Situation

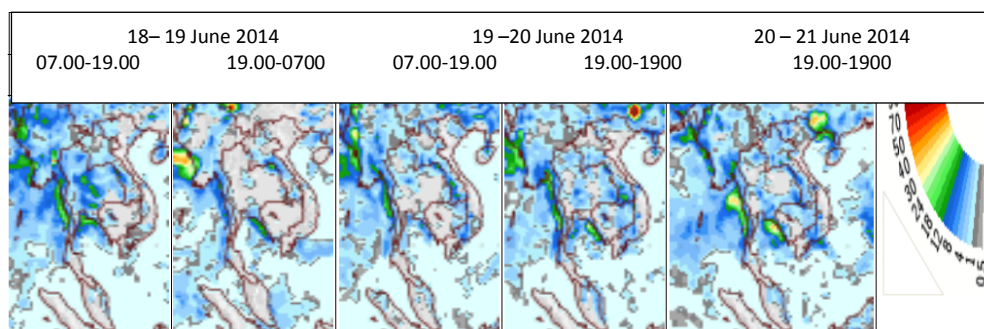
Maximum Rainfall by region from **07.00 AM of 16 June 2014 to 07.00 AM of 17 June 2014**

North	at Muang District	Uttaradit	102.5	mm.
Northeast	at Muang District	kalasin	20.0	mm.
Central	at Uthong District	Suphan Buri	22.6	mm.
East	at Kabinburi District	Prachin Buri	22.0	mm.
South (East coast)	at Muang District	Surat Thani	56.7	mm.
South (west coast)	at Takua Pa District	Phangnga	107.7	mm.



(Source: Thai Meteorological Department – unmeasured rain less than 0.1 mm. Light rain 0.1-10.0 mm. Moderate rain 10.1-35.0 mm. Heavy rain 35.1-90.0 mm. Very heavy rain over 90.1 mm.)

3-day forecast



Source : The National Centers for Environmental Prediction, starting prediction on **16 June 2014**

It rains all over the country about 10-20 mm. during 18-21 June 2014, and in the East and the Lower North about 20-30 mm. during 20-21 June 2014

3. Water Conditions in Reservoirs

Water condition in **large and medium scale reservoirs**: Water volume is **35,915 MCM** or **48%** (available water volume is **12,112 MCM** or **24%**). Water volume in reservoirs, comparing to the year 2013 (**34,286 MCM** or **46%**) is more than the year 2013 about **1,629 MCM**. Water discharge into reservoir is **110.10 MCM**. Water release is **120.58 MCM**, and more water intake capacity is **38,784 MCM**.

Water condition in **large scale reservoirs**: Water volume is **33,843 MCM** or **48%** (available water volume is **10,340 MCM** or **22%**) Water volume in reservoirs, comparing to the year 2013 (**32,356 MCM** or **46%**) is more than year 2013 about **1,487 MCM**. Water discharge into reservoir is **97.63 MCM**. Water release is **110.68 MCM**, and more water intake capacity is **36,483 MCM**.

Water condition in large and medium scale reservoirs on 17 June 2014

Region	Large scale						Medium scale						Total				more intake capacity		
	No.	Capacity	Water Volume				No.	Capacity	Water Volume				No.	Capacity	Water Volume				
			stored	%	usable	%			stored	%	usable	%			Stored	%		usable	%
North	7	24,715	8,343	34	1,604	9	70	873	418	48	332	40	77	25,588	8,761	34	1,936	10	16,827
Northeast	12	8,323	2,898	35	1,248	19	265	2,003	896	45	746	40	277	10,326	3,794	37	1,994	23	6,532
Central	3	1,360	222	16	162	12	15	132	41	31	40	46	18	1,492	263	18	202	15	1,229
West	2	26,605	16,636	63	3,359	25	8	132	78	59	69	56	10	26,737	16,714	63	3,428	25	10,023
East	5	1,173	401	34	321	29	51	649	307	47	268	44	56	1,822	708	39	589	35	1,114
South	4	8,150	5,343	66	3,646	57	39	584	332	57	317	56	43	8,734	5,675	65	3,963	56	3,059
Total	33	70,326	33,843	48	10,340	22	448	4,373	2,072	47	1,772	44	481	74,699	35,915	48	12,112	24	38,784

Unit : MCM

Water condition in main reservoirs: Bhumibol Sirikit Khwae Noi and Pasak, on 17 June 2014

Reservoir	Water volume in reservoir		Available water use		Water discharge into reservoir		Water release		More intake capacity
	Stroed	%	Stroed	%	Today	Yesterday	Today	Yesterday	
Bhumibol	4,471	33	671	7	5.34	5.60	22.00	22.00	8,991
Sirikit	3,395	36	545	8	13.09	8.17	18.08	20.21	6,115
Bhumibol+Sirikit	7,866	34	1,216	7	18.43	13.77	40.08	42.21	15,106
Khwae Noi	143	15	100	11	2.73	2.09	2.59	2.59	796
Pasak Jolasid	102	11	99	10	1.54	1.94	3.08	3.04	858
Total	8,111	33	1,415	8	22.70	17.80	45.75	47.84	16,760

Unit : MCM

10 Large scale reservoirs under water storage criteria (less than or equal to 30% of its capacity)

Reservoir	Water volume in Today 17 June 2014		Available water use 17 June 2014		Water discharge into reservoir		Water release		More Intake Capacity
	Stroed	%	Stroed	%	today	yesterday	today	Yesterday	
1. Mae Kuang	71	27	57	23	0.24	0.16	0.06	0.06	192
2. Khwae Noi	143	15	100	11	2.73	2.09	2.59	2.59	796
3. Huai Luang	27	20	20	16	0.06	0.00	0.09	0.09	108
4. Nam Pung	50	30	40	26	0.15	0.13	0.40	0.59	116
5. Lam Pao	368	19	268	14	0.65	0.66	0.87	0.88	1,612
6. Lam Pra Pleung	24	22	23	21	0.10	0.00	0.09	0.52	86
7. Pasak Jolasid	102	11	99	10	1.54	1.94	3.08	3.04	858
8. Thap Salao	26	16	9	6	0.00	0.00	0.00	0.00	134
9. Khun Dan	14	6	10	5	1.35	0.91	0.08	0.08	210
10. Khlong Siyat	103	25	73	19	0.00	1.58	0.00	0.00	317

Unit : MCM

4. Runoff Condition (at 06.00 am.)

River	Station	Location	River bank	Discharge volume (m ³ /sec)	Water level (m.)	Water discharge		Lower (-) Higher (+) river bank	Criteria	Trend
						Today (m ³ /sec)	Yesterday (m ³ /sec)			
1. Ping	P.1	Muang, Chiang Mai	3.70	440	1.32	20	19	-2.38	lower	up
	P.7A	Muang, Kamphaeng Phet	5.87	4,035	1.06	296	268	-4.81	lower	up
	P.17	Banphot phisai, Nakorn Sawan	38.08	1,815	35.16	194	194	-2.92	lower	stable
2. Wang	W.4A	Samngao, Tak	6.10	458	1.15	17	15	-4.95	lower	up
	3. Yom	Y.1C	Muang, Phare	8.20	1,000	1.03	27	30	-7.17	lower
4. Nan	Y.16	Bang Rakam, Phitsanulok	7.00	368	2.75	52	47	-4.25	lower	up
	N.1	Muang, Nan	7.00	1,265	0.22	32	46	-6.78	lower	down
	N.5A	Muang, Phitsanulok	10.54	1,452	2.20	194	210	-8.34	lower	down
5. Mon	N.67	Chumsaeng, Nakorn Sawan	28.30	1,520	20.43	200	190	-7.87	lower	up
	M.6A	Satuk, Buriram	5.40	330	0.88	2	2	-4.52	lower	stable
	M.9	Muang, Srisaket	9.00	205	0.82	1	1	-8.18	lower	stable
	M.7	Muang, Ubon Ratchathani	7.00	2,360	2.88	-	-	-4.12	-	-
6. Phra Satung	Kgt.10	Muang, Sa Kaeo	11.00	285	5.63	-	-	-5.37	-	-
	7. Bangpakong	Kgt.3	Krabinburi, Prachinburi	10.20	578	0.68	14	11	-9.52	lower
8. Tha Tapao	X.158	Tha Sae, Chumphon	12.00	702	7.77	314	44	-4.23	Normal	up
9. Tapee	X.37A	Prasaeng, Surathani	10.76	464	6.16	63	56	-4.60	lower	up
10. Ko-lok	X119A	Suhai Kolok, Narathiwat	8.20	225	3.73	13	14	-4.47	lower	down
11. Tan Yongmat	X.73	Rangae, Narathiwat	15.58	135	10.63	5	6	-4.95	lower	down

Chao Phraya River Station C.2 discharge volume of 368 m³/sec (yesterday: 361 m³/sec) water level: +18.96 m.M.S.L. which is 7.24 m. lower than the bank.

Chao Phraya Diversion Dam Station C.13 discharge volume of 55 m³ /sec (yesterday: 55 m³/sec), water level at upstream +15.14 m.M.S.L. (yesterday: +15.49 m.M.S.L.), water level at downstream +5.70 m.M.S.L.(yesterday: +5.70 m.M.S.L.)

Water intake into distribution system in eastern ward field Discharge volume of 139 m³/sec (yesterday: 146 m³/sec), at Chai Nat - Pa Sak Canal (Manorom Regulator): 117 m³/sec, at Chai Nat- Ayutthaya Canal (Maharat Regulator), 20 m³/sec, at other small canals 2 m³/sec by water intake from Raphiphat Canal (Phra Narai Regulator): 53 m³/sec.

Water intake into distribution system in western ward field Discharge of 202 m³/sec (yesterday: 206 m³/sec), at Makham Thao Uthong Canal (Makham Thao-Uthong Regulator): 21 m³/sec, at Suphan River (Phonlathep Regulator): 60 m³/sec, at Noi River (Borommathat Regulator):95 m³/sec. and other small canals 26 m³/sec.

Bang Sai District Station C.29A average discharge: 69 m³/sec (yesterday: 60 m³/sec)

Rama IV Barrage Discharge of 21 m³/sec (yesterday: 22 m³/sec)

5. Water Quality

RID monitored and watched the water quality in Chao Phraya River as the table below.

River	Warning Point	Dissolved Oxygen (mg/l)	Salinity (g/l)	Condition	Remarks
Chao Phraya	Mouth of Khlong Samlae, Patumthani	3.91 13 June 2014	0.26 17 June 2014 (08.00)	Normal	- DO is not lower than 2 mg/l - Salinity of water for agriculture is not over 2 g/l (for waterwork is not over 0.25 g/l)
Chao Phraya	Non Pier, Nonthaburi	0.60 13 June 2014	3.66 17 June 2014 (08.00)	DO lower than standard, normal salinity	
Chao Phraya	RID Pier, RID Samsen Bangkok	1.06 13 June 2014	5.05 17 June 2014 (08.00)	DO lower than standard, normal salinity	

6. Water situation in Mekong River

Station	Bank level	Water level 17 June 2014	Water level 16 June 2014	Lower (-) Higher (+) river bank	+ increase - decrease from Yesterday	Trend
Chiangsai, Chiang rai	11.80	3.46	3.47	-8.34	-0.01	down
Chiangkhan, Loei	17.40	6.29	6.14	-11.11	0.15	up
Muang, NongKhai	12.20	3.28	3.02	-8.92	0.26	up
Muang, Nakhonpanom	12.70	3.56	3.48	-9.14	0.08	up
Muang, Mukdaharn	12.80	4.18	4.14	-8.62	0.04	up
Kongchiam, Ubonratchathani	15.50	4.70	4.75	-10.80	-0.05	down

Source : division.dwr.go.th/brdh

7. Drought situation

Department of Disaster Prevention and Mitigation has declared the area to help the victims of disaster emergency (drought disaster) since October 2013 – present: 30 provinces 198 districts 1,285 sub-districts and 13,013 villages as follows:

Sukhothai, Phrae, Tak, Nan, Phitsanulok, Phichit, Lamphun, Chiang Rai, Phetchabun, Buriram, Sisaket, Chaiyaphum, Maha Sarakham, Kalasin, Surin, Nakhon Ratchasima, Nong Khai, Amnart Charoen, Udon Thani, Saraburi, Suphanburi, Kanchanaburi, Pathum Thani, Chachengsao, Sumut Prakan, Sa Kaeo, Surat Thani, Nakhon Srithammarat, Chumphon, Songkhla,

Source : Department of Disaster Prevention and Mitigation

8. Readiness Preparation and Help Offer

1,900 Mobile pumps are prepared by RID in order to help the area of off-season rice and field crops. Now, 48 pumps are installed as below.

8.1 In-season rice field

Region	Province	Pumps	Name list of province
Central, East, West	3	11	Chainat (6) Sing buri (3) Nakhon Sawan (2)
Total	3	11	

8.2 Off-season rice field

Region	Province	Pumps	Name list of province
North	2	5	Uttaradit (4) Tak (1)
Total	2	5	

8.3 Field crops

Region	Province	Pumps	Name list of province
North	2	31	Chiang Rai (3) Phrae (28)
Total	2	31	

8.4 Consumption

Region	Province	Pumps	Name list of province
Central, East, West	1	1	Chainat (1)
Total	1	1	

295 water trucks are prepared (55 trucks for the North, 90 trucks for the Northeast, 114 trucks for the Central, the East and the West and 36 trucks for the South)

Prepared by Mr. Methas Yuenprapan
Reviewed by Mr.Thanet Somboon
Translated by Ms. Janjira Buddhawong