



Water Watch and Monitoring System for Warning Center

Royal Irrigation Department, Ministry of Agriculture and Cooperatives

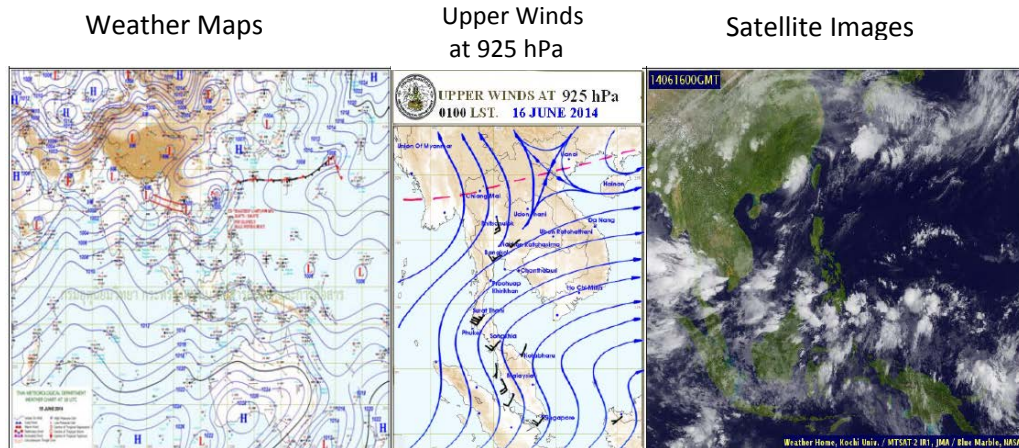
Tel: 0 2669 2560 Fax 0 2243 6965, 0 2241 3350, 0 2243 2098 Hotline: 1460

<http://www.rid.go.th/2009>, <http://wmsc.rid.go.th>, E-mail : wmsc.1460@gmail.com

Daily Report on Water Situation in rainy season 2014

On Monday 16 June 2014

1. Weather Situation

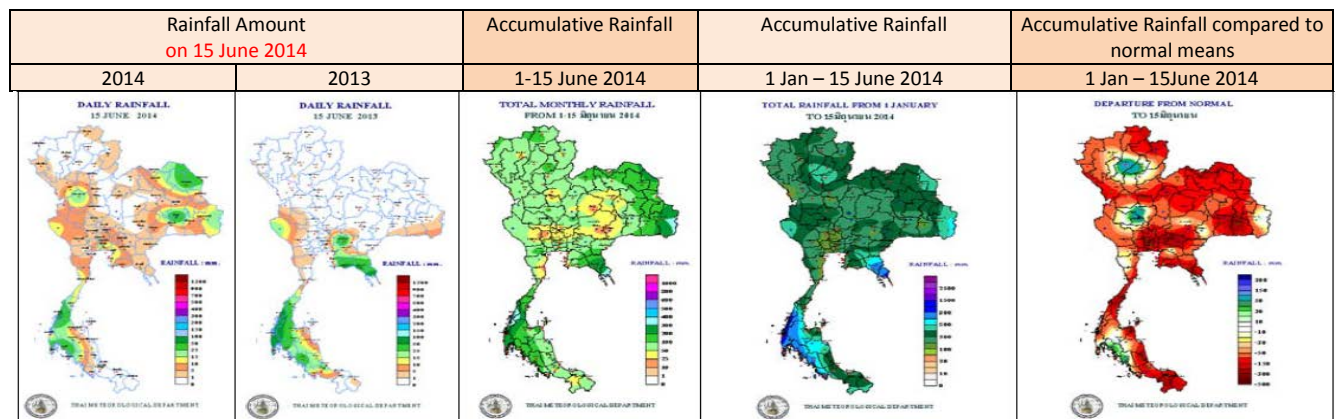


The moderate monsoon trough lies across northern and upper northeastern Thailand. The strong southwest monsoon still prevails across the Andaman Sea, Thailand and the Gulf. Abundant rain, as well as isolated heavy rain, remains over the country. People should beware of the severe weather condition during 1-2 days. The wind waves in the upper Andaman Sea are likely 2-4 meters high. All ships should proceed with caution, and small boats keep ashore. Tropical depression "HAGIBIS" over Fujian, China was downgraded to low pressure and its does not affect Thailand. People who will go to Fujian, China should check the weather forecast before travelling. (<http://www.tmd.go.th/>)

2. Rainfall Situation

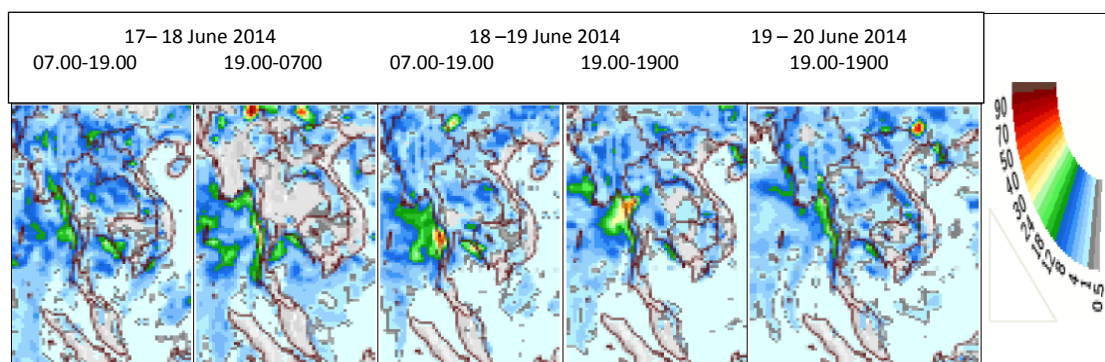
Maximum Rainfall by region from **07.00 AM of 15 June 2014 to 07.00 AM of 16 June 2014**

North	at Muang District	Kamphaeng Phet	26.5	mm.
Northeast	at Muang District	Buriram	60.0	mm.
Central	at Khlong Toei District	Bangkok	33.0	mm.
East	at Khlong Yai District	Trat	73.5	mm.
South (East coast)	at Sawi District	Chumphon	23.8	mm.
South (west coast)	at Muang District	Trang	72.3	mm.



(Source: Thai Meteorological Department – unmeasured rain less than 0.1 mm. Light rain 0.1-10.0 mm. Moderate rain 10.1-35.0 mm. Heavy rain 35.1-90.0 mm. Very heavy rain over 90.1 mm.)

3-day forecast



Source : The National Centers for Environmental Prediction, starting prediction on **15 June 2014**

It rains all over the country about 10-30 mm. during 17-20 June 2014, and in the East and the Lower North about 30-40 mm. during 18-19 June 2014

3. Water Conditions in Reservoirs

Water condition in **large and medium scale reservoirs**: Water volume is **35,928 MCM** or **48%** (available water volume is **12,125 MCM** or **24%**). Water volume in reservoirs, comparing to the year 2013 (**34,230 MCM** or **46%**) is more than the year 2013 about **1,698 MCM**. Water discharge into reservoir is **67.63 MCM**. Water release is **116.75 MCM**, and more water intake capacity is **38,771 MCM**.

Water condition in **large scale reservoirs**: Water volume is **33,860 MCM** or **48%** (available water volume is **10,357 MCM** or **22%**) Water volume in reservoirs, comparing to the year 2013 (**32,342 MCM** or **46%**) is more than year 2013 about **1,518 MCM**. Water discharge into reservoir is **56.69 MCM**. Water release is **109.00 MCM**, and more water intake capacity is **36,466 MCM**.

Water condition in large and medium scale reservoirs on 16 June 2014

Region	Large scale						Medium scale						Total				more intake capacity		
	No.	Capacity	Water Volume				No.	Capacity	Water Volume				No.	Capacity	Water Volume				
			stored	%	usable	%			stored	%	usable	%			Stored	%		usable	%
North	7	24,715	8,366	34	1,627	9	70	873	416	48	330	40	77	25,588	8,782	34	1,957	10	16,806
Northeast	12	8,323	2,899	35	1,249	19	265	2,003	897	45	747	40	277	10,326	3,796	37	1,996	23	6,530
Central	3	1,360	223	16	163	13	15	132	41	31	40	46	18	1,492	264	18	203	15	1,228
West	2	26,605	16,651	63	3,374	25	8	132	77	58	68	55	10	26,737	16,728	63	3,442	26	10,009
East	5	1,173	397	34	317	29	51	649	305	47	266	44	56	1,822	702	39	583	34	1,120
South	4	8,150	5,324	65	3,627	56	39	584	332	57	317	56	43	8,734	5,656	65	3,944	56	3,078
Total	33	70,326	33,860	48	10,357	22	448	4,373	2,068	47	1,768	43	481	74,699	35,928	48	12,125	24	38,771

Unit : MCM

Water condition in main reservoirs: Bhumibol Sirikit Khwae Noi and Pasak, on 16 June 2014

Reservoir	Water volume in reservoir		Available water use		Water discharge into reservoir		Water release		More intake capacity
	Stroed	%	Stroed	%	Today	Yesterday	Today	Yesterday	
Bhumibol	4,489	33	689	7	5.60	8.08	22.00	22.00	8,973
Sirikit	3,401	36	551	8	8.17	10.76	20.21	20.01	6,109
Bhumibol+Sirikit	7,890	34	1,240	8	13.77	18.84	42.21	42.01	15,082
Khwae Noi	143	15	100	11	2.09	1.82	2.59	2.59	796
Pasak Jolasid	103	11	100	10	1.94	2.00	3.04	3.11	857
Total	8,136	33	1,440	8	17.80	22.66	47.84	47.71	16,735

Unit : MCM

9 Large scale reservoirs under water storage criteria (less than or equal to 30% of its capacity)

Reservoir	Water volume in Today 16 June 2014		Available water use 16 June 2014		Water discharge into reservoir		Water release		More Intake Capacity
	Stroed	%	Stroed	%	today	yesterday	today	Yesterday	
1. Mae Kuang	71	27	57	23	0.16	0.18	0.06	0.06	192
2. Khwae Noi	143	15	100	11	2.09	1.82	2.59	2.59	796
3. Huai Luang	27	20	20	16	0.00	0.00	0.09	0.09	108
4. Lam Pao	368	19	268	14	0.66	0.60	0.88	0.82	1,612
5. Lam Pra Pleung	24	22	23	21	0.00	0.00	0.52	0.52	86
6. Pasak Jolasid	103	11	100	10	1.94	2.00	3.04	3.11	857
7. Thap Salao	26	16	9	6	0.00	0.00	0.00	0.00	134
8. Khun Dan	12	5	8	4	0.91	0.51	0.08	0.08	212
9. Khlong Siyat	103	25	73	19	1.58	0.00	0.00	0.00	317

Unit : MCM

4. Runoff Condition (at 06.00 am.)

River	Station	Location	River bank	Discharge volume (m ³ /sec)	Water level (m.)	Water discharge		Lower (-) Higher (+) river bank	Criteria	Trend
						Today (m ³ /sec)	Yesterday (m ³ /sec)			
1. Ping	P.1	Muang, Chiang Mai	3.70	440	1.31	19	25	-2.39	lower	down
	P.7A	Muang, Kamphaeng Phet	5.87	4,035	0.98	268	251	-4.89	lower	up
	P.17	Banphot phisai, Nakorn Sawan	38.08	1,815	35.16	194	205	-2.92	lower	down
2. Wang	W.4A	Samngao, Tak	6.10	458	1.10	15	13	-5.00	lower	up
	Y.1C	Muang, Phare	8.20	1,000	1.07	30	16	-7.13	lower	up
3. Yom	Y.16	Bang Rakam, Phitsanulok	7.00	368	2.63	47	46	-4.37	lower	up
	N.1	Muang, Nan	7.00	1,265	0.38	46	45	-6.62	lower	up
	N.5A	Muang, Phitsanulok	10.54	1,452	2.40	210	210	-8.14	lower	stable
4. Nan	N.67	Chumsaeng, Nakorn Sawan	28.30	1,520	20.32	190	193	-7.98	lower	down
	M.6A	Satuk, Buriram	5.40	330	0.89	2	2	-4.51	lower	stable
	M.9	Muang, Srisaket	9.00	205	0.87	1	1	-8.13	lower	stable
5. Mon	M.7	Muang, Ubon Ratchathani	7.00	2,360	2.80	-	-	-4.20	-	-
	Kgt.10	Muang, Sa Kaeo	11.00	285	5.66	-	-	-5.34	-	-
	Kgt.3	Krabinburi, Prachinburi	10.20	578	0.55	11	9	-9.65	lower	up
7. Bangpakong	X.158	Tha Sae, Chumphon	12.00	702	4.05	44	71	-7.95	lower	down
8. Tha Tapao	X.37A	Prasaeng, Surathani	10.76	464	6.00	56	61	-4.76	lower	down
9. Tapee	X119A	Suhai Kolok, Narathiwat	8.20	225	3.74	14	15	-4.46	lower	down
10. Ko-lok	X.73	Rangae, Narathiwat	15.58	135	10.69	6	6	-4.89	lower	stable
11. Tan Yongmat										

Chao Phraya River Station C.2 discharge volume of 361 m³/sec (yesterday: 373 m³/sec) water level: +18.93 m.M.S.L. which is 7.27 m. lower than the bank.

Chao Phraya Diversion Dam Station C.13 discharge volume of 55 m³/sec (yesterday: 55 m³/sec), water level at upstream +15.49 m.M.S.L. (yesterday: +15.55 m.M.S.L.), water level at downstream +5.70 m.M.S.L. (yesterday: +5.70 m.M.S.L.)

Water intake into distribution system in eastern ward field Discharge volume of 146 m³/sec (yesterday: 150 m³/sec), at Chai Nat - Pa Sak Canal (Manorom Regulator): 121 m³/sec, at Chai Nat- Ayutthaya Canal (Maharat Regulator), 21 m³/sec, at other small canals 4 m³/sec by water intake from Raphiphat Canal (Phra Narai Regulator): 56 m³/sec.

Water intake into distribution system in western ward field Discharge of 206 m³/sec (yesterday: 207 m³/sec), at Makham Thao Uthong Canal (Makham Thao-Uthong Regulator): 22 m³/sec, at Suphan River (Phonlathep Regulator): 61 m³/sec, at Noi River (Borommathat Regulator): 95 m³/sec. and other small canals 28 m³/sec.

Bang Sai District Station C.29A average discharge: 60 m³/sec (yesterday: 65 m³/sec)

Rama IV Barrage Discharge of 22 m³/sec (yesterday: 22 m³/sec)

5. Water Quality

RID monitored and watched the water quality in Chao Phraya River as the table below.

River	Warning Point	Dissolved Oxygen (mg/l)	Salinity (g/l)	Condition	Remarks
Chao Phraya	Mouth of Khlong Samlae, Patumthani	3.86 12 June 2014	0.29 16 June 2014 (08.00)	Normal	- DO is not lower than 2 mg/l - Salinity of water for agriculture is not over 2 g/l (for waterwork is not over 0.25 g/l)
Chao Phraya	Non Pier, Nonthaburi	0.46 12 June 2014	3.56 16 June 2014 (08.00)	DO lower than standard, normal salinity	
Chao Phraya	RID Pier, RID Samsen Bangkok	1.06 12 June 2014	5.91 16 June 2014 (08.00)	DO lower than standard, normal salinity	

6. Water situation in Mekong River

Station	Bank level	Water level 16 June 2014	Water level 15 June 2014	Lower (-) Higher (+) river bank	+ increase - decrease from Yesterday	Trend
Chiangsai, Chiang rai	11.80	3.47	3.31	-8.33	0.16	up
Chiangkhan, Loei	17.40	6.14	5.85	-11.26	0.29	up
Muang, NongKhai	12.20	3.02	2.92	-9.18	0.10	up
Muang, Nakhonpanom	12.70	3.48	3.35	-9.22	0.13	up
Muang, Mukdaharn	12.80	4.14	3.97	-8.66	0.17	up
Kongchiam, Ubonratchathani	15.50	4.75	4.49	-10.75	0.26	up

Source : division.dwr.go.th/brdh

7. Drought situation

Department of Disaster Prevention and Mitigation has declared the area to help the victims of disaster emergency (drought disaster) since October 2013 – present: 32 provinces 213 districts 1,397 sub-districts and 13,930 villages as follows:

Uttaradit, Sukhothai, Phrae, Tak, Nan, Phitsanulok, Phichit, Lamphun, Chiang Rai, Phetchabun, Buriram, Sisaket, Chaiyaphum, Maha Sarakham, Kalasin, Nongbua Lamphu, Surin, Nakhon Ratchasima, Nong Khai, Amnart Charoen, Udon Thani, Saraburi, Suphanburi, Kanchanaburi, Pathum Thani, Chachengsao, Sumut Prakan, Sa Kaeo, Surat Thani, Nakhon Srithammarat, Chumphon, Songkhla,

Source : Department of Disaster Prevention and Mitigation

8. Readiness Preparation and Help Offer

1,900 Mobile pumps are prepared by RID in order to help the area of off-season rice and field crops. **Now, 48** pumps are installed as below.

8.1 In-season rice field

Region	Province	Pumps	Name list of province
Central, East, West	3	11	Chainat (6) Sing buri (3) Nakhon Sawan (2)
Total	3	11	

8.2 Off-season rice field

Region	Province	Pumps	Name list of province
North	2	5	Uttaradit (4) Tak (1)
Total	2	5	

8.3 Field crops

Region	Province	Pumps	Name list of province
North	2	31	Chiang Rai (3) Phrae (28)
Total	2	31	

8.4 Consumption

Region	Province	Pumps	Name list of province
Central, East, West	1	1	Chainat (1)
Total	1	1	

295 water trucks are prepared (55 trucks for the North, 90 trucks for the Northeast, 114 trucks for the Central, the East and the West and 36 trucks for the South)

Prepared by Mr. Methas Yuenprapan
Reviewed by Mr.Thanet Somboon
Translated by Ms. Janjira Buddhawong