



**Water Watch and Monitoring System for Warning Center**

Royal Irrigation Department, Ministry of Agriculture and Cooperatives

Tel: 0 2669 2560 Fax 0 2243 6965, 0 2241 3350, 0 2243 2098 Hotline: 1460

<http://www.rid.go.th/2009>, <http://wmsc.rid.go.th>, E-mail : [wmsc.1460@gmail.com](mailto:wmsc.1460@gmail.com)

**Daily Report on Water Situation in rainy season 2014**

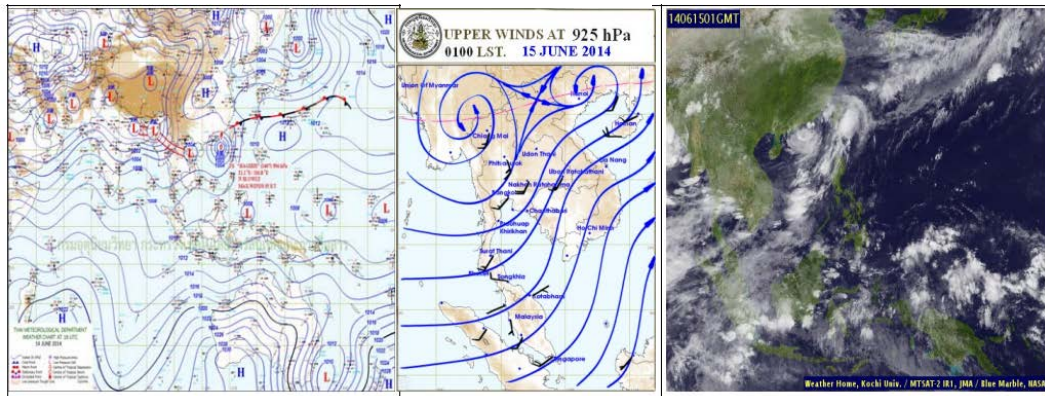
**On Sunday 15 June 2014**

**1. Weather Situation**

Weather Maps

Upper Winds  
at 925 hPa

Satellite Images

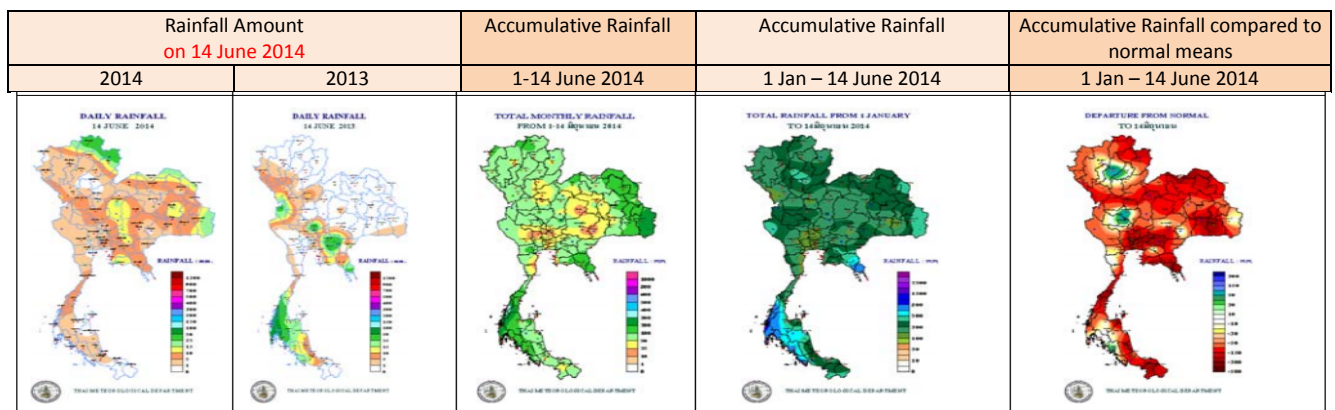


The moderate monsoon trough lies across northern and upper northeastern Thailand. The strong southwest monsoon still prevails across the Andaman Sea, Thailand and the Gulf. Abundant rain, as well as isolated heavy rain, remains over the country. People should beware of the severe weather condition during 1-2 days. The wind waves in the upper Andaman Sea are likely 2-4 meters high. All ships should proceed with caution, and small boats keep ashore. (<http://www.tmd.go.th/>)

**2. Rainfall Situation**

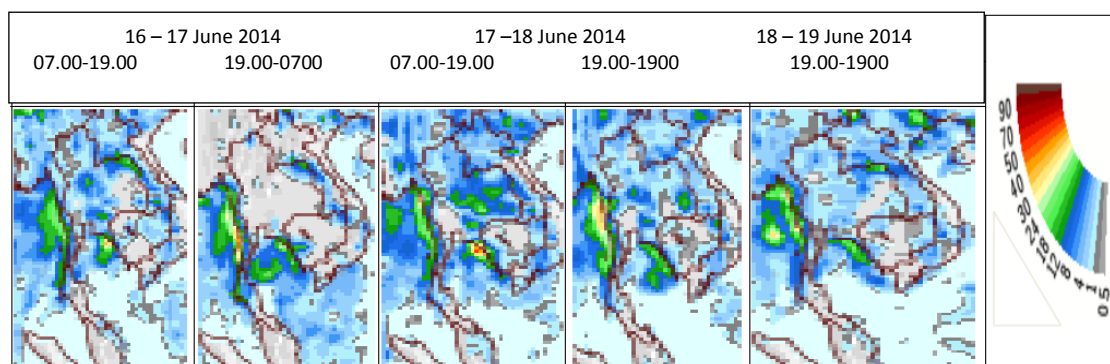
Maximum Rainfall by region from **07.00 AM of 14 June 2014 to 07.00 AM of 15 June 2014**

North	at Thung Chang District	Nan	47.4	mm.
Northeast	at Sawang Wirawong District	Ubon Ratchathani	22.2	mm.
Central	at Bang Phli District	Sumut Prakan	13.8	mm.
East	at Muang District	Rayong	19.3	mm.
South (East coast)	at Sawi District	Chumphon	7.0	mm.
South (west coast)	at Muang District	Trang	10.0	mm.



(Source: Thai Meteorological Department – unmeasured rain less than 0.1 mm. Light rain 0.1-10.0 mm. Moderate rain 10.1-35.0 mm. Heavy rain 35.1-90.0 mm. Very heavy rain over 90.1 mm.)

### 3-day forecast



Source : The National Centers for Environmental Prediction, starting prediction on **14 June 2014**  
It rains all over the country about 10-40 mm. during 16-17 June 2014.

### 3. Water Conditions in Reservoirs

Water condition in **large and medium scale reservoirs**: Water volume is **35,994 MCM** or **48%** (available water volume is **12,191 MCM** or **24%**). Water volume in reservoirs, comparing to the year 2013 (**34,228 MCM** or **46%**) is more than the year 2013 about **1,766 MCM**. Water discharge into reservoir is **74.22 MCM**. Water release is **133.65 MCM**, and more water intake capacity is **38,697 MCM**.

Water condition in **large scale reservoirs**: Water volume is **33,925 MCM** or **48%** (available water volume is **10,422 MCM** or **22%**) Water volume in reservoirs, comparing to the year 2013 (**32,348 MCM** or **46%**) is more than year 2013 about **1,577 MCM**. Water discharge into reservoir is **63.54 MCM**. Water release is **125.82 MCM**, and more water intake capacity is **36,401 MCM**.

#### Water condition in large and medium scale reservoirs on 15 June 2014

Region	Large scale						Medium scale						Total						more intake capacity
	No.	Capacity	Water Volume				No.	Capacity	Water Volume				No.	Capacity	Water Volume				
			stored	%	usable	%			stored	%	usable	%			Stored	%	usable	%	
North	7	24,715	8,395	34	1,656	9	70	873	413	47	327	39	77	25,588	8,808	34	1,983	11	16,780
Northeast	12	8,323	2,901	35	1,251	19	265	2,003	899	45	749	40	277	10,326	3,800	37	2,000	23	6,526
Central	3	1,360	225	17	165	13	15	132	41	31	40	46	18	1,492	266	18	205	15	1,226
West	2	26,605	16,659	63	3,382	25	8	132	77	58	68	55	10	26,737	16,736	63	3,450	26	10,001
East	5	1,173	396	34	316	29	51	649	306	47	267	44	56	1,822	702	39	583	34	1,120
South	4	8,150	5,349	66	3,652	57	39	584	333	57	318	56	43	8,734	5,682	65	3,970	57	3,052
<b>Total</b>	<b>33</b>	<b>70,326</b>	<b>33,925</b>	<b>48</b>	<b>10,422</b>	<b>22</b>	<b>448</b>	<b>4,373</b>	<b>2,069</b>	<b>47</b>	<b>1,769</b>	<b>43</b>	<b>481</b>	<b>74,699</b>	<b>35,994</b>	<b>48</b>	<b>12,191</b>	<b>24</b>	<b>38,705</b>

Unit : MCM

#### Water condition in main reservoirs: Bhumibol Sirikit Khwae Noi and Pasak, on 15 June 2014

Reservoir	Water volume in reservoir		Available water use		Water discharge into reservoir		Water release		More intake capacity
	Stroed	%	Stroed	%	Today	Yesterday	Today	Yesterday	
Bhumibol	4,506	33	706	7	8.08	3.69	22.00	22.00	8,956
Sirikit	3,414	36	564	8	10.76	7.94	20.01	20.06	6,096
Bhumibol+Sirikit	<b>7,920</b>	<b>34</b>	<b>1,270</b>	<b>8</b>	<b>18.84</b>	<b>11.63</b>	<b>42.01</b>	<b>42.06</b>	<b>15,052</b>
Khwae Noi	145	15	102	11	1.82	1.82	2.59	2.59	794
Pasak Jolasid	105	11	102	11	2.00	1.08	3.11	3.04	855
<b>Total</b>	<b>8,170</b>	<b>33</b>	<b>1,474</b>	<b>8</b>	<b>22.66</b>	<b>14.53</b>	<b>47.71</b>	<b>47.69</b>	<b>16,701</b>

Unit : MCM

## 9 Large scale reservoirs under water storage criteria (less than or equal to 30% of its capacity)

Reservoir	Water volume in Today 15 June 2014		Available water use 15 June 2014		Water discharge into reservoir		Water release		More Intake Capacity
	Stroed	%	Stroed	%	today	yesterday	today	Yesterday	
	1. Mae Kuang	71	27	57	23	0.18	0.18	0.06	
2. Khwae Noi	145	15	102	11	1.82	1.82	2.59	2.59	794
3. Huai Luang	27	20	20	16	0.00	0.22	0.09	0.09	108
4. Lam Pao	368	19	268	14	0.60	2.34	0.82	0.86	1,612
5. Lam Pra Pleung	25	23	24	22	0.00	0.00	0.52	0.52	85
6. Pasak Jolasid	105	11	102	11	2.00	1.08	3.11	3.04	855
7. Thap Salao	26	16	9	6	0.00	0.00	0.00	0.00	134
8. Khun Dan	12	5	8	4	0.51	0.22	0.08	0.08	212
9. Khlong Siyat	102	24	72	18	0.00	0.00	0.00	0.00	318

Unit : MCM

## 4. Runoff Condition (at 06.00 am.)

River	Station	Location	River bank	Discharge volume (m <sup>3</sup> /sec)	Water level (m.)	Water discharge		Lower (-) Higher (+) river bank	Criteria	Trend
						Today (m <sup>3</sup> /sec)	Yesterday (m <sup>3</sup> /sec)			
1. Ping	P.1	Muang, Chiang Mai	3.70	440	1.38	25	30	-2.32	lower	down
	P.7A	Muang, Kamphaeng Phet	5.87	4,035	0.93	251	231	-4.94	lower	up
	P.17	Banphot phisai, Nakorn Sawan	38.08	1,815	35.19	205	191	-2.89	lower	up
2. Wang	W.4A	Samngao, Tak	6.10	458	1.02	13	9	-5.08	lower	up
3. Yom	Y.1C	Muang, Phare	8.20	1,000	0.85	16	11	-7.35	lower	up
	Y.16	Bang Rakam, Phitsanulok	7.00	368	2.60	46	46	-4.40	lower	up
4. Nan	N.1	Muang, Nan	7.00	1,265	0.37	45	13	-6.63	lower	up
	N.5A	Muang, Phitsanulok	10.54	1,452	2.40	210	210	-8.14	lower	stable
	N.67	Chumsaeng, Nakorn Sawan	28.30	1,520	20.35	193	166	-7.95	lower	up
5. Mon	M.6A	Satuk, Buriram	5.40	330	0.90	0	0	-4.50	lower	stable
	M.9	Muang, Srisaket	9.00	205	1.04	1	0	-7.96	lower	up
	M.7	Muang, Ubon Ratchathani	7.00	2,360	2.85	-	-	-4.15	-	-
	Kgt.10	Muang, Sa Kaeo	11.00	285	5.49	-	-	-5.51	-	-
7. Bangpakong	Kgt.3	Krabinburi, Prachinburi	10.20	578	0.44	9	8	-9.76	lower	up
8. Tha Tapao	X.158	Tha Sae, Chumphon	12.00	702	4.53	71	77	-7.47	lower	down
9. Tapee	X.37A	Prasaeng, Surathani	10.76	464	6.11	61	49	-4.65	lower	up
10. Ko-lok	X119A	Suhai Kolok, Narathiwat	8.20	225	3.80	15	25	-4.40	lower	down
11. Tan Yongmat	X.73	Rangae, Narathiwat	15.58	135	10.74	6	7	-4.84	lower	down

**Chao Phraya River Station C.2** discharge volume of 373 m<sup>3</sup>/sec (yesterday: 394 m<sup>3</sup>/sec) water level: +18.98 m.M.S.L. which is 7.22 m. lower than the bank.

**Chao Phraya Diversion Dam Station C.13** discharge volume of 55 m<sup>3</sup>/sec (yesterday: 55 m<sup>3</sup>/sec), water level at upstream +15.55 m.M.S.L. (yesterday: +15.50 m.M.S.L.), water level at downstream +5.70 m.M.S.L. (yesterday: +5.70 m.M.S.L.)

**Water intake into distribution system in eastern ward field** Discharge volume of 150 m<sup>3</sup>/sec (yesterday: 145 m<sup>3</sup>/sec), at Chai Nat - Pa Sak Canal (Manorom Regulator): 123 m<sup>3</sup>/sec, at Chai Nat- Ayutthaya Canal (Maharat Regulator), 26 m<sup>3</sup>/sec, at other small canals 1 m<sup>3</sup>/sec by water intake from Raphiphat Canal (Phra Narai Regulator): 56 m<sup>3</sup>/sec.

**Water intake into distribution system in western ward field** Discharge of 207 m<sup>3</sup>/sec (yesterday: 206 m<sup>3</sup>/sec), at Makham Thao Uthong Canal (Makham Thao-Uthong Regulator): 23 m<sup>3</sup>/sec, at Suphan River (Phonlathep Regulator): 61 m<sup>3</sup>/sec, at Noi River (Borommathat Regulator): 96 m<sup>3</sup>/sec. and other small canals 27 m<sup>3</sup>/sec.

**Bang Sai District Station C.29A** average discharge: 65 m<sup>3</sup>/sec (yesterday: 62 m<sup>3</sup>/sec)

**Rama IV Barrage** Discharge of 22 m<sup>3</sup>/sec (yesterday: 22 m<sup>3</sup>/sec)

## 5. Water Quality

RID monitored and watched the water quality in Chao Phraya River as the table below.

River	Warning Point	Dissolved Oxygen (mg/l)	Salinity (g/l)	Condition	Remarks
Chao Phraya	Mouth of Khlong Samlae, Patumthani	3.86 12 June 2014	0.32 15 June 2014 (08.00)	Normal	- DO is not lower than 2 mg/l - Salinity of water for agriculture is not over 2 g/l (for waterwork is not over 0.25 g/l)
Chao Phraya	Non Pier, Nonthaburi	0.46 12 June 2014	3.28 15 June 2014 (08.00)	DO lower than standard, normal salinity	
Chao Phraya	RID Pier, RID Samsen Bangkok	1.06 12 June 2014	5.83 15 June 2014 (08.00)	DO lower than standard, normal salinity	

## 6. Water situation in Mekong River

Station	Bank level	Water level 13 June 2014	Water level 12 June 2014	Lower (-) Higher (+) river bank	+ increase - decrease from Yesterday	Trend
Chiangsai, Chiang rai	11.80	3.23	3.20	-8.57	0.03	up
Chiangkhan, Loei	17.40	5.54	5.58	-11.86	-0.04	down
Muang, NongKhai	12.20	2.84	2.82	-9.36	0.02	up
Muang, Nakhonpanom	12.70	2.76	2.63	-9.94	0.13	up
Muang, Mukdaharn	12.80	3.11	3.00	-9.69	0.11	up
Kongchiam, Ubonratchathani	15.50	3.50	3.30	-12.00	0.20	up

Source : division.dwr.go.th/brdh

## 7. Drought situation

Department of Disaster Prevention and Mitigation has declared the area to help the victims of disaster emergency (drought disaster) since October 2013 – present: 32 provinces 213 districts 1,397 sub-districts and 13,930 villages as follows:

Uttaradit, Sukhothai, Phrae, Tak, Nan, Phitsanulok, Phichit, Lamphun, Chiang Rai, Phetchabun, Buriram, Sisaket, Chaiyaphum, Maha Sarakham, Kalasin, Nongbua Lamphu, Surin, Nakhon Ratchasima, Nong Khai, Amnart Charoen, Udon Thani, Saraburi, Suphanburi, Kanchanaburi, Pathum Thani, Chachengsao, Sumut Prakan, Sa Kaeo, Surat Thani, Nakhon Srithammarat, Chumphon, Songkhla,

Source : Department of Disaster Prevention and Mitigation

## 8. Readiness Preparation and Help Offer

**1,900** Mobile pumps are prepared by RID in order to help the area of off-season rice and field crops. **Now, 48** pumps are installed as below.

### 8.1 In-season rice field

Region	Province	Pumps	Name list of province
Central, East, West	3	11	Chainat (6) Sing buri (3) Nakhon Sawan (2)
Total	3	11	

### 8.2 Off-season rice field

Region	Province	Pumps	Name list of province
North	2	5	Uttaradit (4) Tak (1)
Total	2	5	

### 8.3 Field crops

Region	Province	Pumps	Name list of province
North	2	31	Chiang Rai (3) Phrae (28)
Total	2	31	

#### 8.4 Consumption

Region	Province	Pumps	Name list of province
Central, East, West	1	1	Chainat (1)
Total	1	1	

295 water trucks are prepared (55 trucks for the North, 90 trucks for the Northeast, 114 trucks for the Central, the East and the West and 36 trucks for the South)

\*\*\*\*\*

Prepared by Mr. Methas Yuenprapan  
Reviewed by Mr.Thanet Somboon  
Translated by Ms. Janjira Buddhawong