



Water Watch and Monitoring System for Warning Center

Royal Irrigation Department, Ministry of Agriculture and Cooperatives

Tel: 0 2669 2560 Fax 0 2243 6965, 0 2241 3350, 0 2243 2098 Hotline: 1460

<http://www.rid.go.th/2009>, <http://wmsc.rid.go.th>, E-mail : wmsc.1460@gmail.com

Daily Report on Water Situation in rainy season 2014

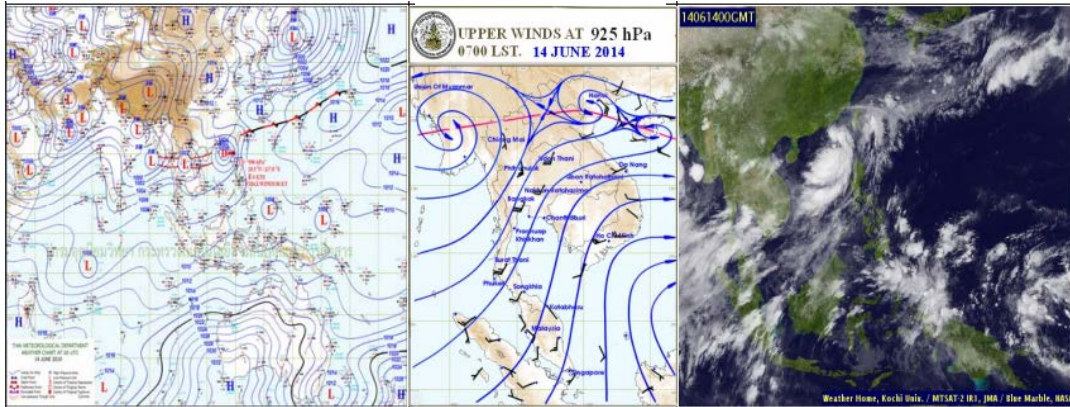
On Saturday 14 June 2014

1. Weather Situation

Weather Maps

Upper Winds at 925 hPa

Satellite Images

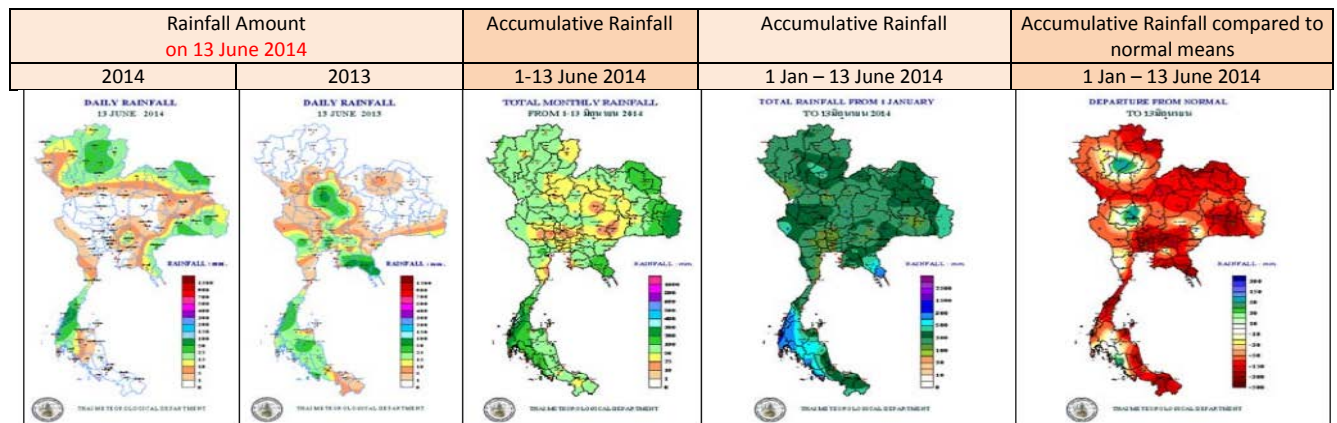


The moderate monsoon trough lies across northern and upper northeastern Thailand. The strong southwest monsoon still prevails across the Andaman Sea, Thailand and the Gulf. Abundant rain, as well as isolated heavy rain, remains over the country. People should beware of the severe weather condition during 1-2 days. The wind waves in the upper Andaman Sea are likely 2-4 meters high. All ships should proceed with caution, and small boats keep ashore. (<http://www.tmd.go.th/>)

2. Rainfall Situation

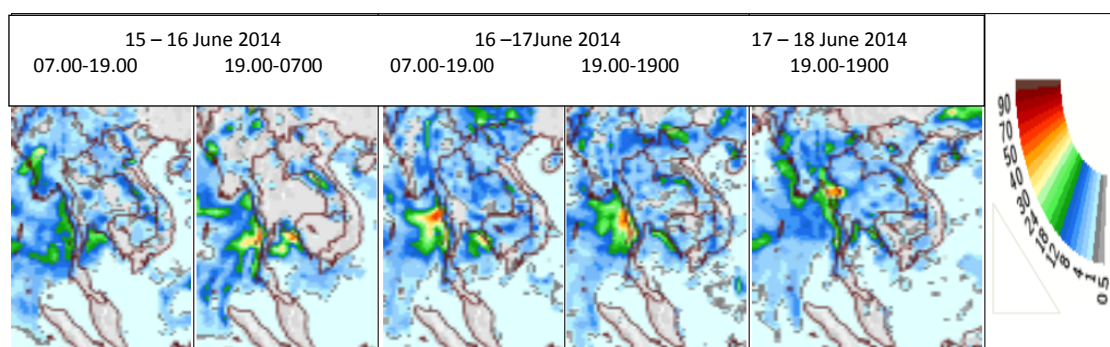
Maximum Rainfall by region from 07.00 AM of 13 June 2014 to 07.00 AM of 14 June 2014

North	at Thoen District	Lampang	63.6	mm.
Northeast	at Muang District	Loei	41.9	mm.
Central	at Thong Pha Phum District	Kanchanaburi	1.6	mm.
East	at Aranyaprathet District	Sa Kaeo	30.4	mm.
South (East coast)	at Sawi District	Chumphon	52.0	mm.
South (west coast)	at Muang District	Ranong	79.0	mm.



(Source: Thai Meteorological Department – unmeasured rain less than 0.1 mm. Light rain 0.1-10.0 mm. Moderate rain 10.1-35.0 mm. Heavy rain 35.1-90.0 mm. Very heavy rain over 90.1 mm.)

3-day forecast



Source : The National Centers for Environmental Prediction, starting prediction on **13 June 2014**
It rains all over the country about 10-40 mm.during 15-18 June 2014.

3. Water Conditions in Reservoirs

Water condition in **large and medium scale reservoirs**: Water volume is **36,054 MCM** or **48%** (available water volume is **12,251 MCM** or **24%**). Water volume in reservoirs, comparing to the year 2013 (**34,191 MCM** or **46%**) is more than the year 2013 about **1,863 MCM**. Water discharge into reservoir is **78.06 MCM**. Water release is **118.88 MCM**, and more water intake capacity is **38,645 MCM**.

Water condition in **large scale reservoirs**: Water volume is **33,990 MCM** or **48%** (available water volume is **10,487 MCM** or **22%**) Water volume in reservoirs, comparing to the year 2013 (**32,327 MCM** or **46%**) is more than year 2013 about **1,663 MCM**. Water discharge into reservoir is **72.59 MCM**. Water release is **110.99 MCM**, and more water intake capacity is **36,336 MCM**.

Water condition in large and medium scale reservoirs on 14 June 2014

Region	Large scale						Medium scale						Total				more intake capacity		
	No.	Capacity	Water Volume				No.	Capacity	Water Volume				No.	Capacity	Water Volume				
			stored	%	usable	%			stored	%	usable	%			Stored	%		usable	%
North	7	24,715	8,418	34	1,679	9	70	873	412	47	326	39	77	25,588	8,830	35	2,005	11	16,758
Northeast	12	8,323	2,900	35	1,250	19	265	2,003	895	45	745	40	277	10,326	3,795	37	1,995	23	6,531
Central	3	1,360	226	17	166	13	15	132	41	31	40	46	18	1,492	267	18	206	15	1,225
West	2	26,605	16,683	63	3,406	26	8	132	77	58	68	55	10	26,737	16,760	63	3,474	26	9,977
East	5	1,173	396	34	316	29	51	649	306	47	267	44	56	1,822	702	39	583	34	1,120
South	4	8,150	5,367	66	3,670	57	39	584	333	57	318	56	43	8,734	5,700	65	3,988	57	3,034
Total	33	70,326	33,990	48	10,487	22	448	4,373	2,064	47	1,764	43	481	74,699	36,054	48	12,251	24	38,645

Unit : MCM

Water condition in main reservoirs: Bhumibol Sirikit Khwae Noi and Pasak, on 14 June 2014

Reservoir	Water volume in reservoir		Available water use		Water discharge into reservoir		Water release		More intake capacity
	Stroed	%	Stroed	%	Today	Yesterday	Today	Yesterday	
Bhumibol	4,521	34	721	7	3.69	2.45	22.00	22.00	8,941
Sirikit	3,423	36	573	9	7.94	5.08	20.06	20.10	6,087
Bhumibol+Sirikit	7,944	35	1,294	8	11.63	7.53	42.06	42.10	15,028
Khwae Noi	145	15	102	11	1.82	1.85	2.59	2.59	794
Pasak Jolasid	106	11	103	11	1.08	1.11	3.04	3.07	854
Total	8,195	33	1,499	8	14.53	10.49	47.69	47.76	16,676

Unit : MCM

9 Large scale reservoirs under water storage criteria (less than or equal to 30% of its capacity)

Reservoir	Water volume in Today 14 June 2014		Available water use 14 June 2014		Water discharge into reservoir		Water release		More Intake Capacity
	Stroed	%	Stroed	%	today	yesterday	today	Yesterday	
1. Mae Kuang	71	27	57	23	0.18	0.08	0.06	0.06	192
2. Khwae Noi	145	15	102	11	1.82	1.85	2.59	2.59	794
3. Huai Luang	28	21	21	16	0.22	0.00	0.09	0.09	107
4. Lam Pao	368	19	268	14	2.34	0.69	0.86	0.91	1,612
5. Lam Pra Pleung	26	24	25	23	0.00	0.00	0.52	0.48	84
6. Pasak Jolasid	106	11	103	11	1.08	1.11	3.04	3.07	854
7. Thap Salao	26	16	9	6	0.00	0.00	0.00	0.00	134
8. Khun Dan	11	5	7	3	0.22	0.14	0.08	0.08	213
9. Khlong Siyat	102	24	72	18	0.00	0.00	0.00	0.00	318

Unit : MCM

4. Runoff Condition (at 06.00 am.)

River	Station	Location	River bank	Discharge volume (m ³ /sec)	Water level (m.)	Water discharge		Lower (-) Higher (+) river bank	Criteria	Trend
						Today (m ³ /sec)	Yesterday (m ³ /sec)			
1.Ping	P.1	Muang, Chiang Mai	3.70	440	1.45	30	23	-2.25	lower	up
	P.7A	Muang, Kamphaeng Phet	5.87	4,035	0.87	231	264	-5.00	lower	down
	P.17	Banphot phisai, Nakorn Sawan	38.08	1,815	35.15	191	191	-2.93	lower	stable
2.Wang	W.4A	Samngao, Tak	6.10	458	0.84	9	7	-5.26	lower	up
3. Yom	Y.1C	Muang, Phare	8.20	1,000	0.75	11	10	-7.45	lower	up
	Y.16	Bang Rakam, Phitsanulok	7.00	368	2.60	46	33	-4.40	lower	up
4. Nan	N.1	Muang, Nan	7.00	1,265	-0.04	13	11	-7.04	lower	up
	N.5A	Muang, Phitsanulok	10.54	1,452	2.40	210	210	-8.14	lower	stable
	N.67	Chumsaeng, Nakorn Sawan	28.30	1,520	20.50	166	212	-7.80	lower	down
5. Mon	M.6A	Satuk, Buriram	5.40	330	0.92	0	0	-4.48	lower	stable
	M.9	Muang, Srisaket	9.00	205	0.76	0	0	-8.24	lower	stable
	M.7	Muang, Ubon Ratchathani	7.00	2,360	2.85	-	-	-4.15	-	-
6.Phra Satung	Kgt.10	Muang, Sa Kaeo	11.00	285	5.50	-	-	-5.50	-	-
7.Bangpakong	Kgt.3	Kraburi, Prachinburi	10.20	578	0.41	8	8	-9.79	lower	stable
8.Tha Tapao	X.158	Tha Sae, Chumphon	12.00	702	4.62	77	12	-7.38	lower	up
9.Tapee	X.37A	Prasaeng, Surathani	10.76	464	5.80	49	42	-4.96	lower	up
10.Ko-lok	X119A	Suhai Kolok, Narathiwat	8.20	225	4.15	25	32	-4.05	lower	down
11.Tan Yongmat	X.73	Rangae, Narathiwat	15.58	135	10.83	7	13	-4.75	lower	down

Chao Phraya River Station C.2 discharge volume of 394 m³/sec (yesterday: 399 m³/sec) water level: +19.06 m.M.S.L. which is 7.14 m. lower than the bank.

Chao Phraya Diversion Dam Station C.13 discharge volume of 55 m³/sec (yesterday: 55 m³/sec), water level at upstream +15.50 m.M.S.L. (yesterday: +15.46 m.M.S.L.), water level at downstream +5.70 m.M.S.L.(yesterday: +5.60 m.M.S.L.)

Water intake into distribution system in eastern ward field Discharge volume of 145 m³/sec (yesterday: 142 m³/sec), at Chai Nat - Pa Sak Canal (Manorom Regulator): 116 m³/sec, at Chai Nat- Ayutthaya Canal (Maharat Regulator), 26 m³/sec, at other small canals 3 m³/sec by water intake from Raphiphat Canal (Phra Narai Regulator): 58 m³/sec.

Water intake into distribution system in western ward field Discharge of 206 m³/sec (yesterday: 206 m³/sec), at Makham Thao Uthong Canal (Makham Thao-Uthong Regulator): 22 m³/sec, at Suphan River (Phonlathep Regulator): 60 m³/sec, at Noi River (Borommathat Regulator):96 m³/sec. and other small canals 28 m³/sec.

Bang Sai District Station C.29A average discharge: 62 m³/sec (yesterday: 69 m³/sec)

Rama IV Barrage Discharge of 22 m³/sec (yesterday: 18 m³/sec)

5. Water Quality

RID monitored and watched the water quality in Chao Phraya River as the table below.

River	Warning Point	Dissolved Oxygen (mg/l)	Salinity (g/l)	Condition	Remarks
Chao Phraya	Mouth of Khlong Samlae, Patumthani	3.86 12 June 2014	0.31 14 June 2014 (08.00)	Normal	- DO is not lower than 2 mg/l - Salinity of water for agriculture is not over 2 g/l (for waterwork is not over 0.25 g/l)
Chao Phraya	Non Pier, Nonthaburi	0.46 12 June 2014	3.02 14 June 2014 (08.00)	DO lower than standard, normal salinity	
Chao Phraya	RID Pier, RID Samsen Bangkok	1.06 12 June 2014	5.71 14 June 2014 (08.00)	DO lower than standard, normal salinity	

6. Water situation in Mekong River

Station	Bank level	Water level 13 June 2014	Water level 12 June 2014	Lower (-) Higher (+) river bank	+ increase - decrease from Yesterday	Trend
Chiangsai, Chiang rai	11.80	3.23	3.20	-8.57	0.03	up
Chiangkhan, Loei	17.40	5.54	5.58	-11.86	-0.04	down
Muang, NongKhai	12.20	2.84	2.82	-9.36	0.02	up
Muang, Nakhonpanom	12.70	2.76	2.63	-9.94	0.13	up
Muang, Mukdaharn	12.80	3.11	3.00	-9.69	0.11	up
Kongchiam, Ubonratchathani	15.50	3.50	3.30	-12.00	0.20	up

Source : division.dwr.go.th/brdh

7. Drought situation

Department of Disaster Prevention and Mitigation has declared the area to help the victims of disaster emergency (drought disaster) since October 2013 – present: 32 provinces 213 districts 1,397 sub-districts and 13,930 villages as follows:

Region	Affected drought area		
	province	district	Name list of province
North	13	124	Uttaradit (9) Sukhothai (9) Phrae (8) Tak (9) Nan (14) Phayao (24) Phitsanulok (7) Phichit (4) Mae Hong Son (7) Chiang Mai (25) Lamphun (8) Chiang Rai (10) Uthai thane (5)
Northeast	11	106	Buriram (7) Khon Kaen (23) Sisaket (11) Chaiyaphum (16) Maha Sarakham (13) Kalasin (18) Nongbua Lamphu (6) Surin (2) Nakhon Ratchasima (2) Nong Khai (3) Amnart Charoen (5)
Central	9	31	Sing buri (5) Saraburi (2) Chainat (6) Suphanburi (2) Kanchanaburi (3) Sumut Prakan (2) Nakhon Sawan (6) Pathum Thani (2) Phetburi (3)
East	6	39	Chachengsao (7) Chanthaburi (10) Prachinburi (7) Trat (6) Chonburi (1) Sa Kaeo (8)
South	8	43	Trang (10) Satun (4) Krabi (8) Surat Thani (1) Nakhon Srithammarat (9) Chumphon (6) Pattani (2) Songkhla (3)
Total	47	343	

Source : Department of Disaster Prevention and Mitigation

8. Readiness Preparation and Help Offer

1,900 Mobile pumps are prepared by RID in order to help the area of off-season rice and field crops. **Now, 48** pumps are installed as below.

8.1 In-season rice field

Region	Province	Pumps	Name list of province
Central, East, West	3	11	Chainat (6) Sing buri (3) Nakhon Sawan (2)
Total	3	11	

8.2 Off-season rice field

Region	Province	Pumps	Name list of province
North	2	5	Uttaradit (4) Tak (1)
Total	2	5	

8.3 Field crops

Region	Province	Pumps	Name list of province
North	2	31	Chiang Rai (3) Phrae (28)
Total	2	31	

8.4 Consumption

Region	Province	Pumps	Name list of province
Central, East, West	1	1	Chainat (1)
Total	1	1	

295 water trucks are prepared (55 trucks for the North, 90 trucks for the Northeast, 114 trucks for the Central, the East and the West and 36 trucks for the South)

Prepared by Mr. Methas Yuenprapan
Reviewed by Mr.Thanet Somboon
Translated by Ms. Janjira Buddhawong